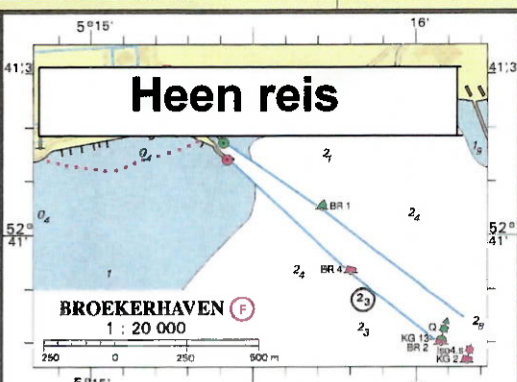
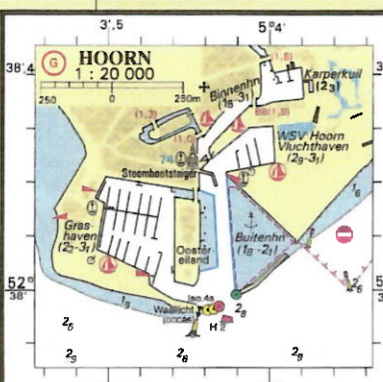


5°E 5' 10' 15' 20' 25'



MARKERMEER
1 : 100 000 (52° 40' N)
Mercator projectie (WGS 84)

DIEPTEN IN METERS
Harled tot IJsselmeer Winterpeil (- NAP-4dm)
(Het Zomerpeil (ex -okt.) ligt 2dm onder NAP)

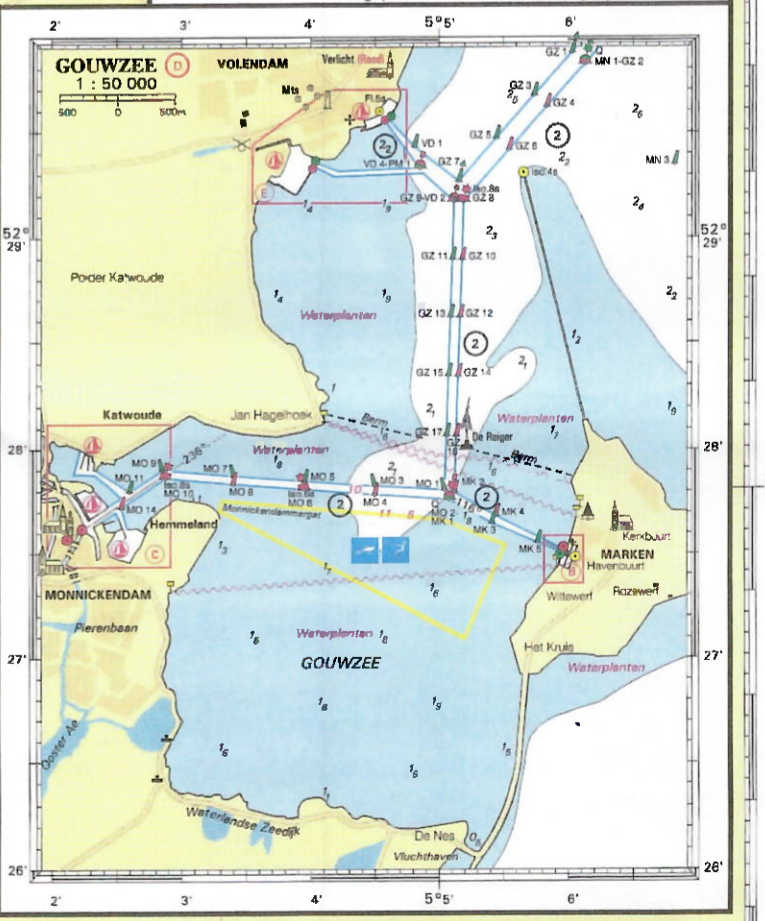
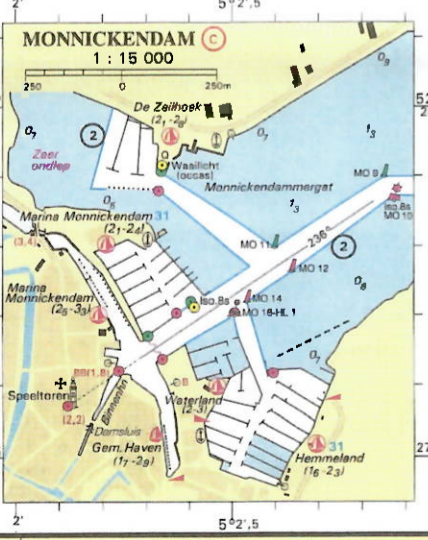
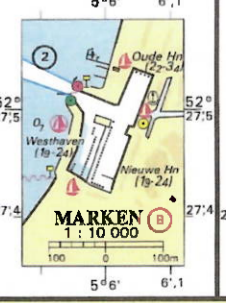
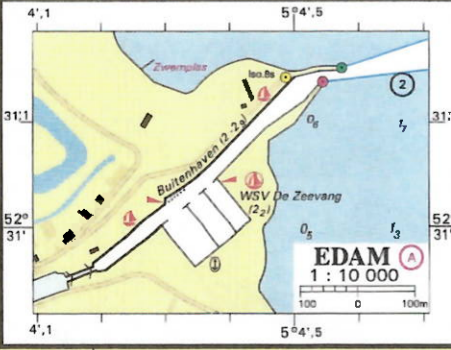
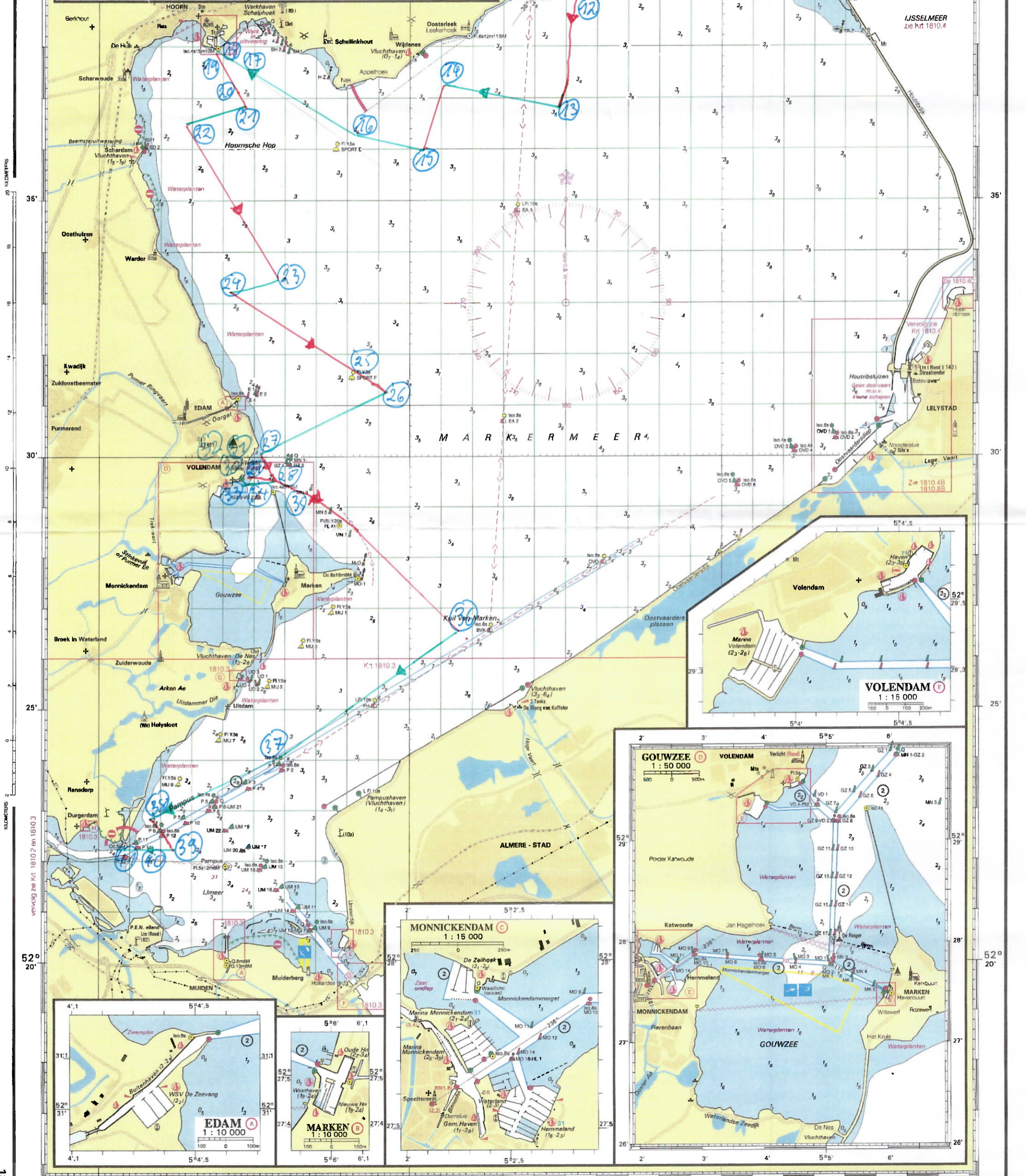
HOOGTEN IN METERS
t.o.v. NAP

SOUNDINGS IN METRES
Reduced to IJsselmeer Winterpeil (- NAP-4dm)
(Summerlevel (Apr -Oct.) lies 2dm below NAP)

HEIGHTS IN METRES
above NAP

IJSELMEER
zie Krt 1810.4

Heen reis



1810.9